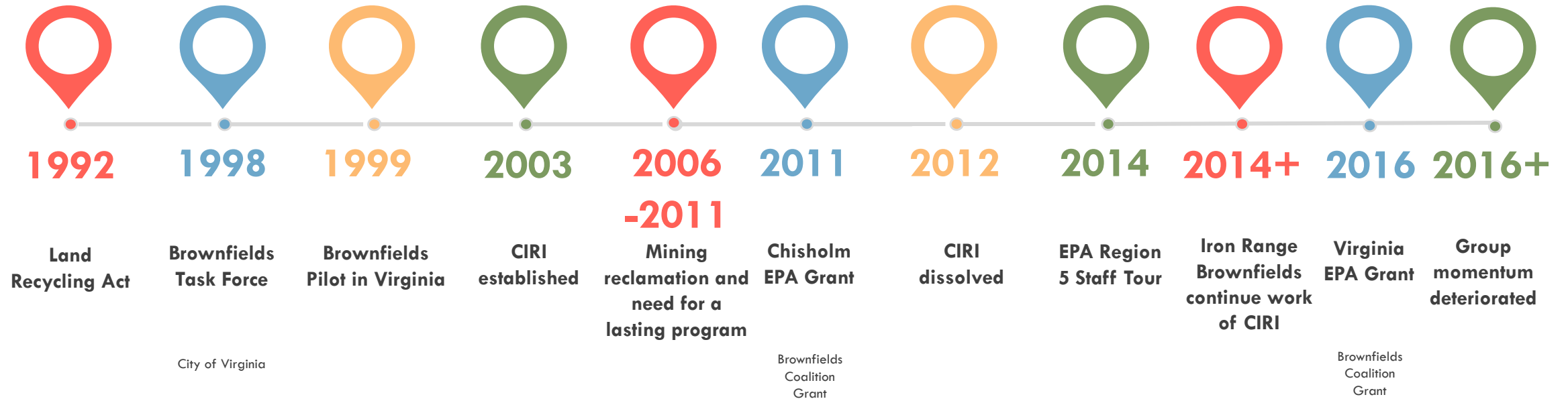




Iron Range Brownfields and Land Redevelopment Conference Recap

Paul Peltier, RAMS

History of Brownfields on the Iron Range



Recent challenges have lead to stronger momentum which led to hosting a conference.

Iron Range Brownfields and Land Redevelopment Conference



Speakers and Sessions

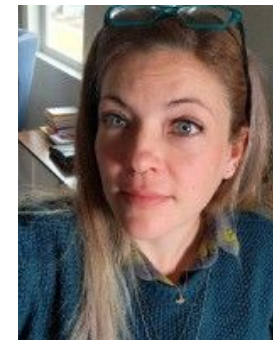
**Is it a
brownfield?
KSU TAB**



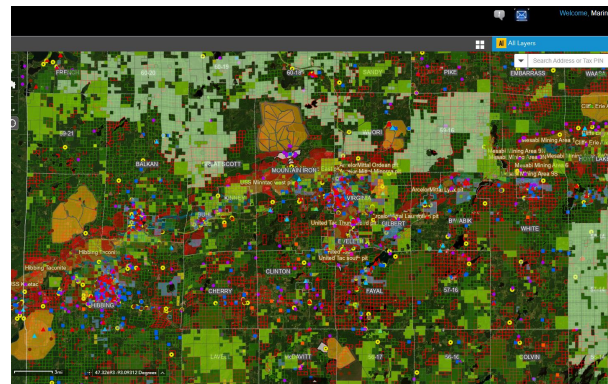
**Understanding Brownfields:
Definitions, Law and Policy
Flaherty & Hood, P.A.**



**Exploring Impact of Brownfields: Health &
Safety, Environmental, Economic
MPCA and MN DEED**



**The Iron Range: Uniqueness and Opportunities for Brownfield Redevelopment
St. Louis County and Northeast Technical Services**



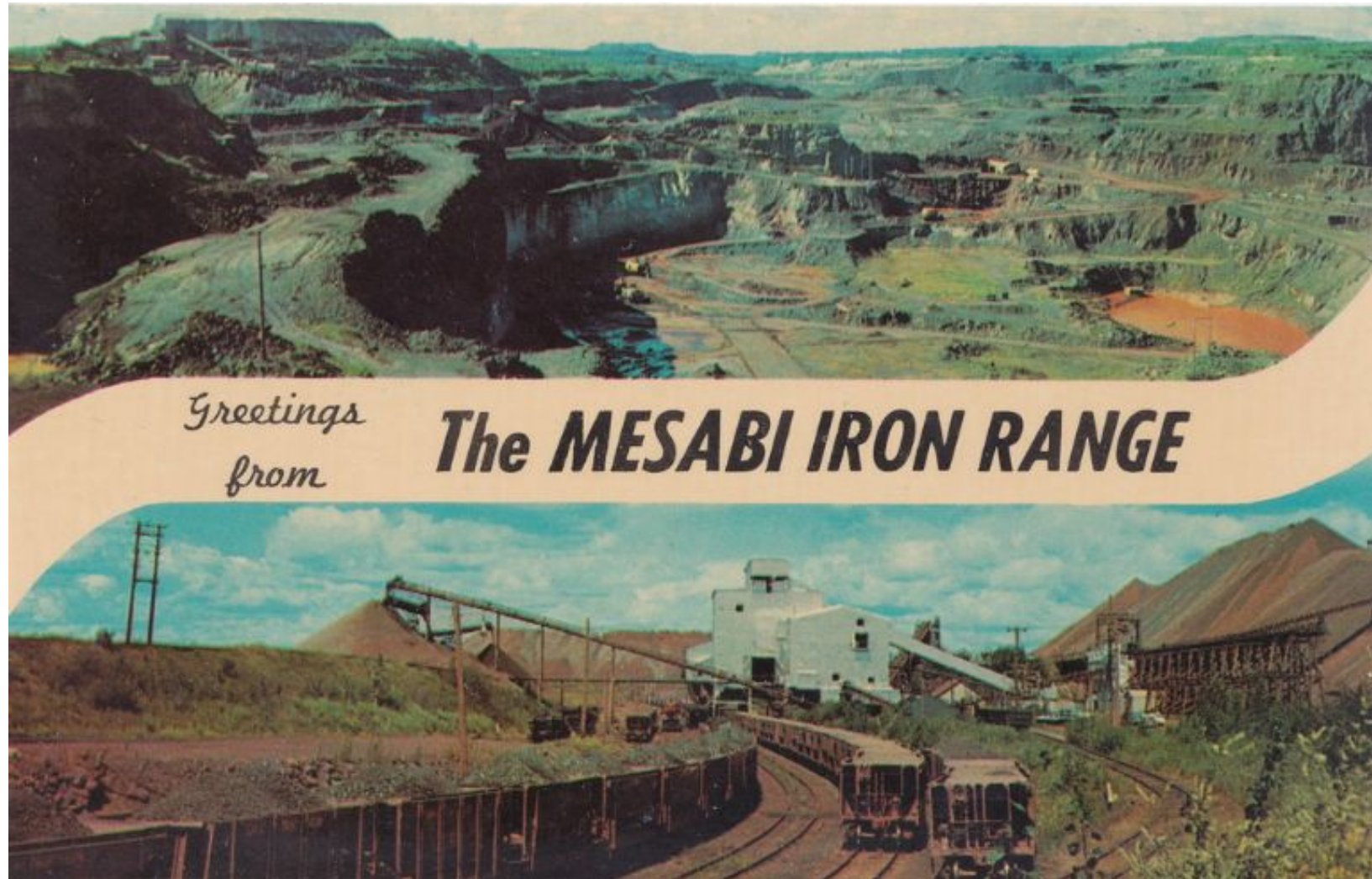
The Iron Range: Uniqueness and Opportunities for Brownfield Redevelopment

OR...WE ARE DIFFERENT AND SO ARE OUR BROWNFIELDS

A solid green horizontal bar spanning the width of the slide at the bottom.

UNIQUENESS'S

- Locations and Towns proximate to historic underground mines and open pits
- Limited Land for Development - Land Use, Ownership, and Encumbrances
- Re-development of available land requires knowledge of mining history
- Brownfield Economics – Larger funding gaps and multiple agency support



Locations and their legacy impacts



A Look at the Land: Land Use, Ownership, and Encumbrances

LAND INFORMATION PORTAL

Welcome, MarinucciJ

Search Results Details Map

Layer List

- ☒ Labels
- ☐ Administrative Boundaries
- ☐ Addresses
- ☐ Ownership
- ☐ Public Lands
- ☒ Cadastral
- ☐ Economic Development
 - ☐ Housing Projects
 - ☐ Development Opportunities
 - ☐ Development Programs & Areas
 - ☐ Historic Sites and Districts
 - ☐ Transportation
 - ☐ Utilities
- ☒ Environmental Concerns
 - ☒ MPCA Sites
- ☐ Emergency Operations
- ☐ Market Activity
- ☐ Property Health Indicators
- ☐ Zoning

Map View: Aerial imagery showing land use, ownership, and encumbrances. Labels include BALKAN, CHISHOLM, and HIBBING. Roads shown include Hwy 5, Hwy 73, Hwy 169, and Hwy 67. A search bar at the top right allows for address or tax PIN lookup. A scale bar at the bottom indicates 0.4 miles. The map is overlaid with various data layers, including cadastral boundaries and environmental concerns.

A Look at the Land: Land Use, Ownership, and Encumbrances

LAND INFORMATION PORTAL

Welcome, MarinucciJ

Search Results Details Map

Layer List

- ☒ Labels
- ☐ Administrative Boundaries
- ☐ Addresses
- ☐ Ownership
- ☒ Public Lands
- ☒ Cadastral
- ☐ Economic Development
 - ☐ Housing Projects
 - ☐ Development Opportunities
 - ☐ Development Programs & Areas
 - ☐ Historic Sites and Districts
 - ☐ Transportation
 - ☐ Utilities
- ☒ Environmental Concerns
 - ☒ MPCA Sites
- ☐ Emergency Operations
- ☐ Market Activity
- ☐ Property Health Indicators
- ☐ Zoning

Map View: Aerial imagery with overlaid land use and ownership data. The map shows a grid of colored polygons representing different land parcels. Labels for 'BALKAN', 'CHISHOLM', and 'HIBBING' are visible. Roads like Hwy 5, Hwy 73, Hwy 169, and Hwy 67 are shown. A search bar at the top right allows for searching by address or tax PIN. A scale bar at the bottom left indicates 0.4 miles. The map is centered at 47.47332, -92.96184 Degrees.

A Look at the Land: Land Use, Ownership, and Encumbrances



A Look at the Land: Land Use, Ownership, and Encumbrances

LAND INFORMATION PORTAL

Welcome, MarinucciJ

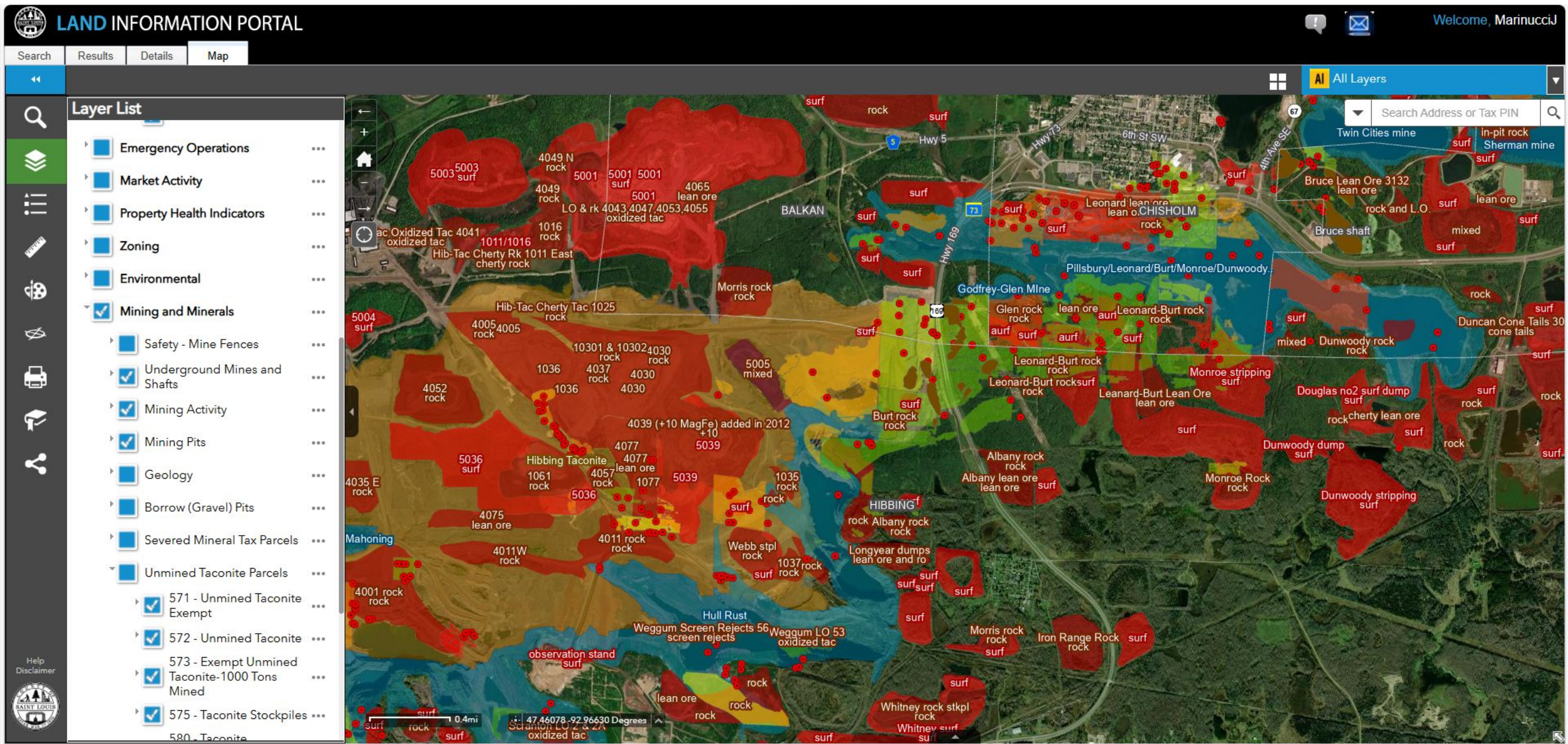
Search Results Details Map

Layer List

- Emergency Operations ...
- Market Activity ...
- Property Health Indicators ...
- Zoning ...
- Environmental ...
- ☒ Mining and Minerals ...
 - Safety - Mine Fences ...
 - Underground Mines and Shafts ...
 - Mining Activity ...
 - Mining Pits ...
 - ☒ Geology ...
 - Borrow (Gravel) Pits ...
 - Severed Mineral Tax Parcels ...
 - Unmined Taconite Parcels ...
 - ☒ 571 - Unmined Taconite Exempt ...
 - ☒ 572 - Unmined Taconite ...
 - 573 - Exempt Unmined Taconite-1000 Tons Mined ...
 - ☒ 575 - Taconite Stockpiles ...
 - 580 - Taconite ...

Map View: Aerial imagery with overlaid land use and ownership data. The map shows a large area of land, primarily colored in shades of green and yellow, indicating different land use categories. Key locations labeled include BALKAN, CHISHOLM, HIBBING, and Biwabik Iron Formation. Major roads shown include Hwy 5, Hwy 73, Hwy 169, 6th St SW, and 4th Ave SE. A scale bar indicates 0.4mi. The map is centered at 47.47082 -92.96768 Degrees.

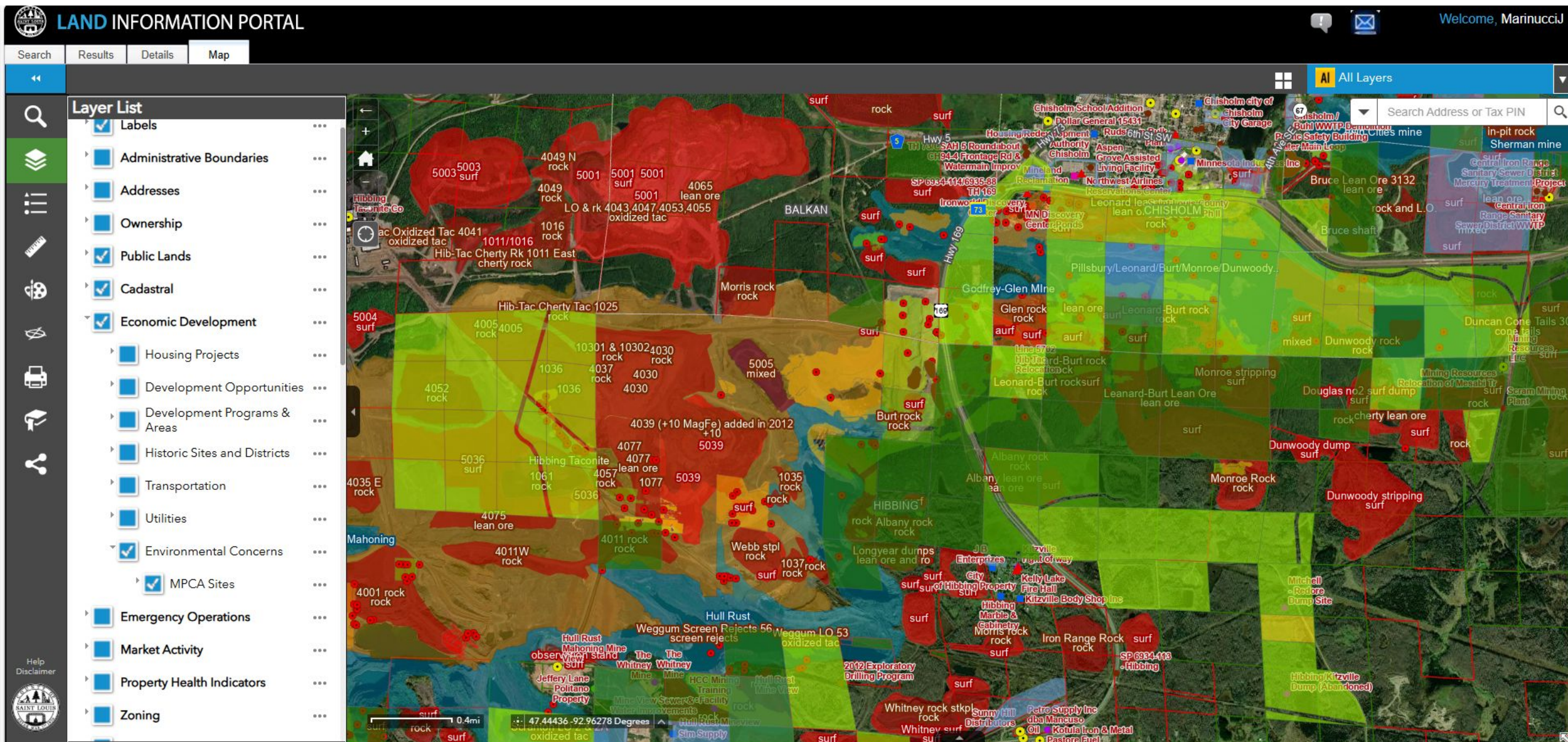
A Look at the Land: Land Use, Ownership, and Encumbrances



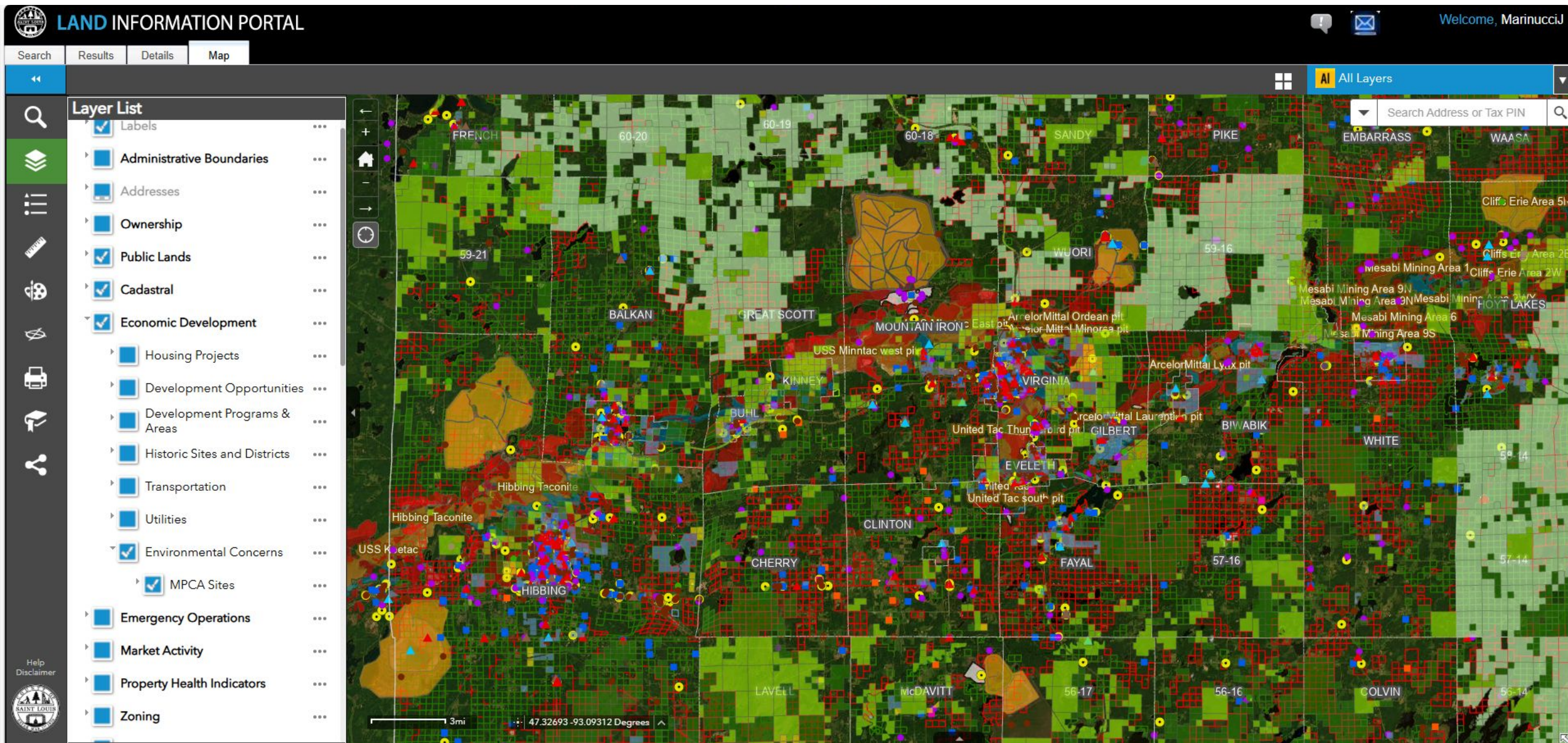
A Look at the Land: Land Use, Ownership, and Encumbrances



A Look at the Land: Land Use, Ownership, and Encumbrances



A Look at the Land: Land Use, Ownership, and Encumbrances

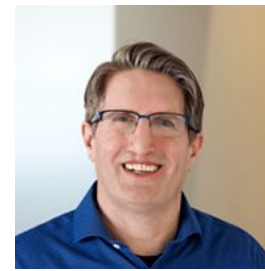


Speakers and Sessions

Lifecycle of a Brownfield



Case Study: Pier B



Case Study: Ely Depot



Resourceful Partners Panel:



Tour: NewRange



Outcomes and Next Steps

